

SAN LUIS BAY REALTY
PRESENTS:
5585 MERLIN COURT
KINGFISHER
LOT#237



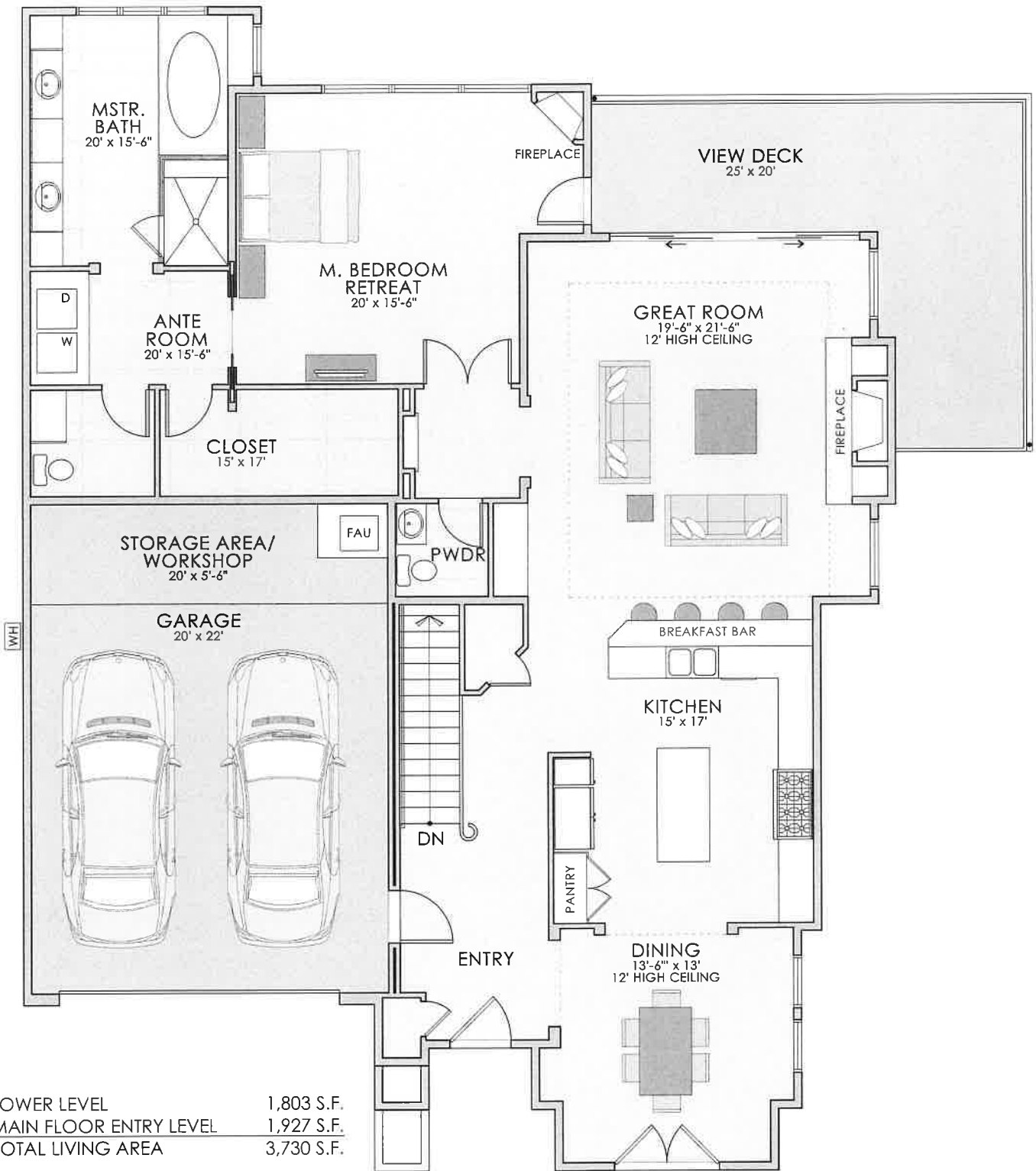
3 BEDS 3.5 BATH, SF 3,730



- * Located in San Luis Bay Estates, a gated community
- * Elegant Semi-Custom Spanish-style home
- * A short 10 minute drive to San Luis Obispo and Pismo Beach
- * Adjacent to permanent open space and hiking trails

Taylor Ross North
BRE#01936978

(805) 709- 1126
www.sanluisbayrealty.com



LOWER LEVEL 1,803 S.F.
 MAIN FLOOR ENTRY LEVEL 1,927 S.F.
 TOTAL LIVING AREA 3,730 S.F.

GARAGE 605 S.F.
 COVERED VIEW PATIOS 208 S.F.
 VIEW DECK 287 S.F.
 HOME SITE AREA APPROX. 6,032 S.F.

FOR ILLUSTRATION PURPOSES ONLY
 ACTUAL PLANS MAY VARY

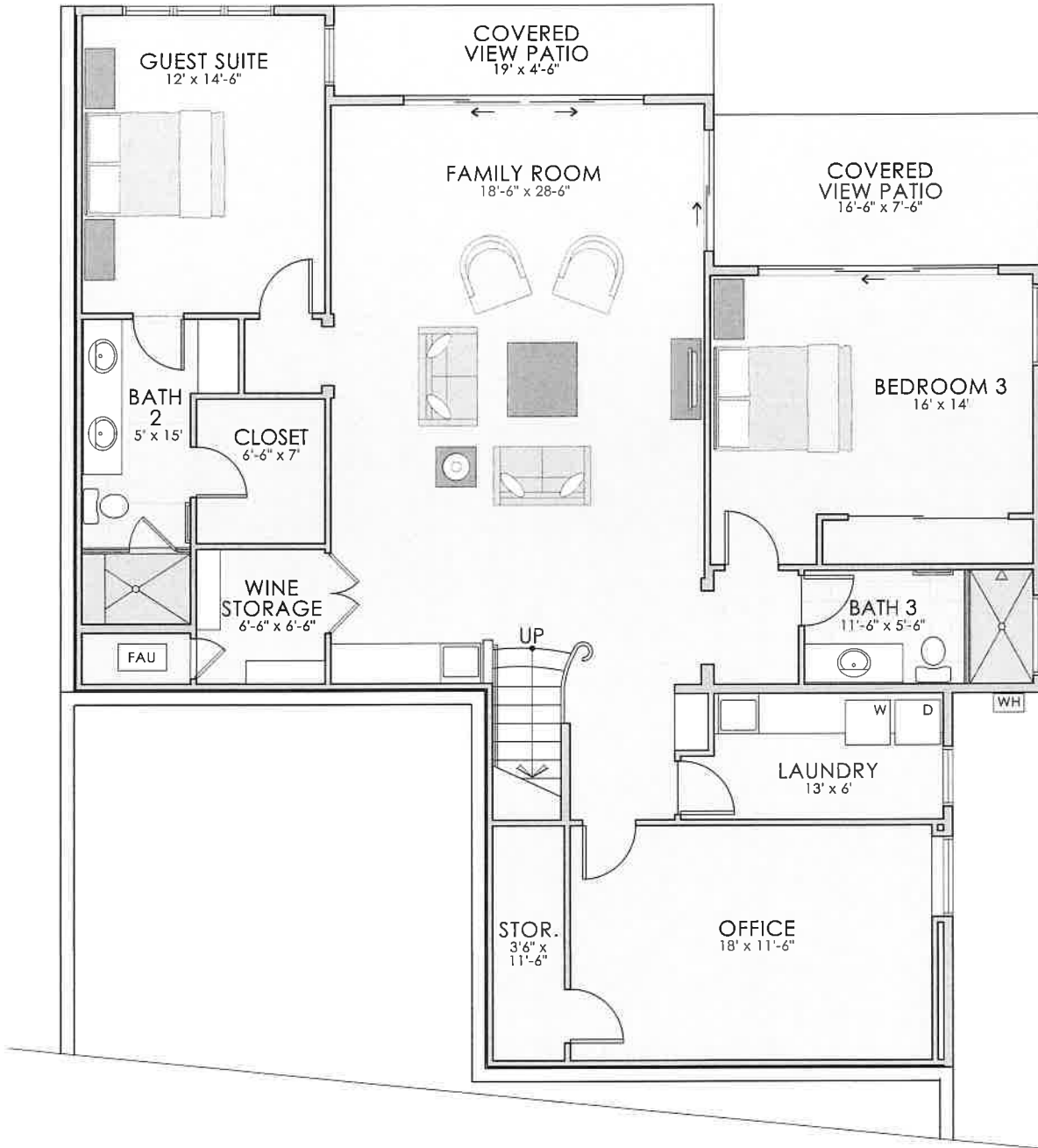


KINGFISHER LOT 237 - 5585 MERLIN COURT - MAIN FLOOR ENTRY LEVEL

SCALE: 1/8" = 1'-0"



NORTH



LOWER LEVEL 1,803 S.F.
 MAIN FLOOR ENTRY LEVEL 1,927 S.F.
 TOTAL LIVING AREA 3,730 S.F.

GARAGE 605 S.F.
 COVERED VIEW PATIOS 208 S.F.
 VIEW DECK 287 S.F.
 HOME SITE AREA APPROX. 6,032 S.F.

FOR ILLUSTRATION PURPOSES ONLY
 ACTUAL PLANS MAY VARY

